



Product information

Brass particle separator, with particle separator and optional magnetic insert.

Dimension range (DN)	20 - 50
PN	10
Temperature (°C)	0 - 110
Main material	Brass



Area of use

Exdirt D is effective in separating magnetic, non-magnetic particles, and sludge in heating, cooling, and solar systems where the fluid is water. It can also be installed in systems with mixtures of water/glycols and water/ethanol, but with a maximum concentration of 50%. It is not suitable for systems with mixtures of water/salts.

By applying a particle separator in the system, sludge and particles with a size of up to 5 micrometers (>5micron) are separated, reducing the risk of flow disturbances and circulation problems. It contributes to increased operational reliability under difficult operating conditions and reduces the need for maintenance.

Tender text

PMB.22 Separators for the purification of liquid media

Particle separator AT 8042-... made of brass with magnetic insert, PN10, with particle separator and large collection chamber that can be easily drained through a ball valve.

Quality assurance

AFS 2023:5, 8 paragraf, AFS 2016:1, 8 paragraf, PED 2014/68/EU, PED 2014/68/EU art 4.3

Should not be CE-marked.

Product marking: Marked with dimensions, maximum operating pressure, type number, and manufacturer's name.

Energy and environment declaration

Product Bvb: Avoided

Product BVB ID: 110738

Subject to notification under REACH

Reach date: 9/23/2024 11:58:00 AM

Item number	SCIP number
8042M20	84b87c57-9b43-46a7-88c3-b8f8e952ed5f
8042M22	84b87c57-9b43-46a7-88c3-b8f8e952ed5f
8042M25	84b87c57-9b43-46a7-88c3-b8f8e952ed5f
8042M32	84b87c57-9b43-46a7-88c3-b8f8e952ed5f
8042M40	84b87c57-9b43-46a7-88c3-b8f8e952ed5f
8042M50	84b87c57-9b43-46a7-88c3-b8f8e952ed5f
8042-20	84b87c57-9b43-46a7-88c3-b8f8e952ed5f
8042-22	84b87c57-9b43-46a7-88c3-b8f8e952ed5f
8042-25	84b87c57-9b43-46a7-88c3-b8f8e952ed5f
8042-32	84b87c57-9b43-46a7-88c3-b8f8e952ed5f
8042-40	84b87c57-9b43-46a7-88c3-b8f8e952ed5f
8042-50	84b87c57-9b43-46a7-88c3-b8f8e952ed5f

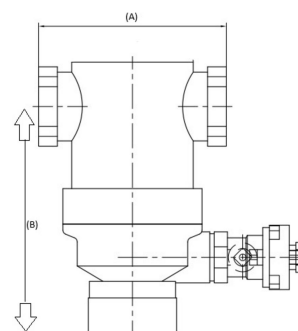
List of details

Pos	Component	Material
1	Separator - mesh	
2	Valve body	Brass
3	Magnetic clip, detachable	
4	Drainvalve with shut-off	

Measurements and weight

Dimension range (DN): 20 - 50

DN	A	B	Net weight (kg)
20	85	102.3	1
22	85	103	1
25	88	120	1.2
32	88	140	1.3
40	88	174	1.5
50	132	215	3.9



Function and design

The particle separator effectively removes sludge and particles in heating and cooling systems that are transported with the system fluid. To effectively separate these from the fluid, the separation housing is large in relation to the connection dimension. When the fluid passes through the separator's housing, the flow rate is reduced. This reduces the velocity through the separation housing, allowing dirt and particles to be optimally separated as they pass through a special wire mesh. This allows dirt and particles to be separated from the fluid, fall downwards, and collect at the bottom of the housing. With the help of the magnetic insert, magnetic particles also "stick" to the separator.

Exdirt separates sludge and particles with minimal pressure drop during continuous operation. Accumulated dirt is placed on the bottom of the separator and easily emptied by opening the drain valve, releasing the particles into, for example, a collection bucket without disrupting the system's operation. The sludge accumulation chamber has a large capacity, providing long intervals between flushes.

Dimension range: G 3/4- 2.

Technical data

Main material: Brass

Included materials: Brass

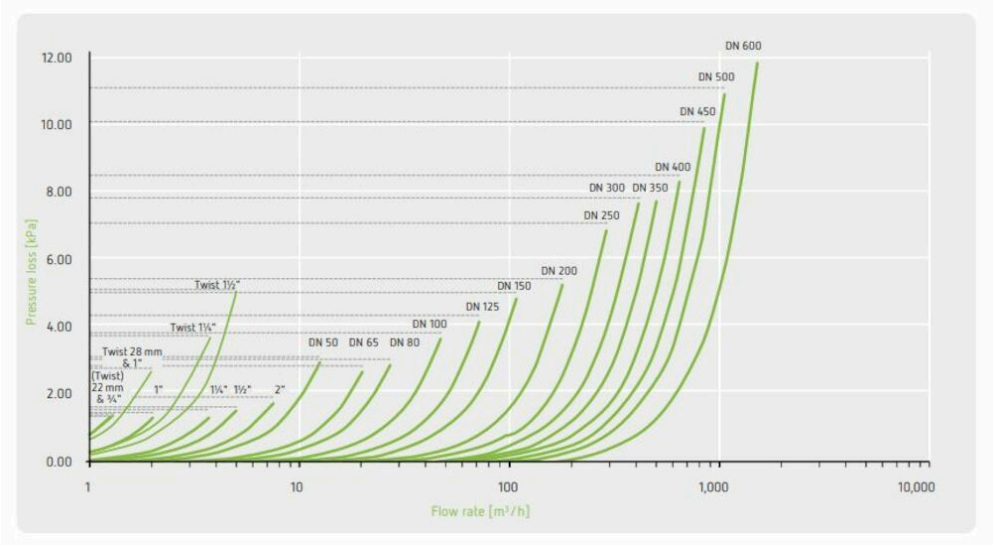
Temperature (°C): 0 - 110

PN: 10

Connection: Internal thread ISO 228-1 (G, BSPP), External thread ISO 228-1 (G, BSPP), Olive & Nut

ETIM classification: EC010260 - Air-/dirt separator for central heating/cooling system

Comment to colour: Brass untreated



Item number	Max system flow (m3/h)	Execution	Connection 1	Connection 1 - spec.	Connection 2	Connection 2 - spec.
8042M20	1.2	Magnetic insert	Internal thread ISO 228-1 (G, BSPP)	3/4	Internal thread ISO 228-1 (G, BSPP)	3/4
8042M22	1.2	Magnetic insert	Olive & Nut	22mm	Olive & Nut	22mm
8042M25	2	Magnetic insert	Internal thread ISO 228-1 (G, BSPP)	1	Internal thread ISO 228-1 (G, BSPP)	1
8042M32	3.7	Magnetic insert	Internal thread ISO 228-1 (G, BSPP)	1 1/4	Internal thread ISO 228-1 (G, BSPP)	1 1/4
8042M40	5	Magnetic insert	Internal thread ISO 228-1 (G, BSPP)	1 1/2	Internal thread ISO 228-1 (G, BSPP)	1 1/2

Item number	Max system flow (m ³ /h)	Execution	Connection 1	Connection 1 - spec.	Connection 2	Connection 2 - spec.
8042M50	7.5	Magnetic insert	Internal thread ISO 228-1 (G, BSPP)	2	Internal thread ISO 228-1 (G, BSPP)	2
8042-20	1.2	Particle separation	Internal thread ISO 228-1 (G, BSPP)	3/4	Internal thread ISO 228-1 (G, BSPP)	3/4
8042-22	1.2	Particle separation	Olive & Nut	22mm	Olive & Nut	22mm
8042-25	2	Particle separation	Internal thread ISO 228-1 (G, BSPP)	1	Internal thread ISO 228-1 (G, BSPP)	1
8042-32	3.7	Particle separation	Internal thread ISO 228-1 (G, BSPP)	1 1/4	Internal thread ISO 228-1 (G, BSPP)	1 1/4
8042-40	5	Particle separation	Internal thread ISO 228-1 (G, BSPP)	1 1/2	Internal thread ISO 228-1 (G, BSPP)	1 1/2
8042-50	7.5	Particle separation	Internal thread ISO 228-1 (G, BSPP)	2	Internal thread ISO 228-1 (G, BSPP)	2

Installation and maintenance

Possible mounting position: Horizontal
See product sheet.

Please feel free to contact us

We answer your questions by e-mail and telephone. No question is too small, no challenge is too big. You are always welcome at Armatec.

info@armatec.se | +46 31 89 01 00 | www.armatec.se

THE COMPANY'S MANAGEMENT SYSTEM
IS CERTIFIED BY DNV
ISO 9001 • ISO 14001